

# Optional Accessories and Products



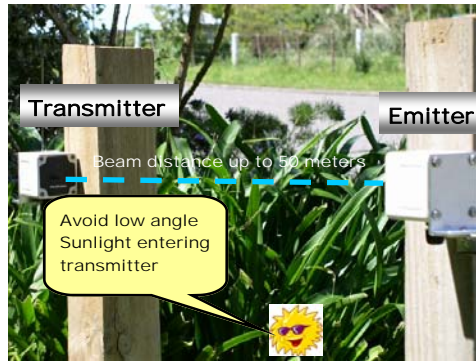
*Parabeam*®

500-S

Quick Install Guide

Please read manual for more detailed instructions

**1.** Find two suitable mounting points across driveway where nothing is likely to cause false activations by interfering with the detection beam. Make sure low-angle sunlight will not enter the "eye" of the transmitter. If possible plan to mount the transmitter where it will have the clearest line of sight to your house. Avoid shade when locating the solar panels. (solar panels may be several metres from beam units if needed.)



**5.** Fit the Correct Covers to each beam unit... Turn each screw a few turns at a time so the covers go on evenly and once resistance is felt, stop turning!



**2.** Remove front covers from beam units using a correctly sized screwdriver and insert 4 stainless steel screws into the corner mounting holes. Attach the brackets and tighten nuts. The smaller brackets allow you to align the beam units for reliable performance (*always use the brackets*)

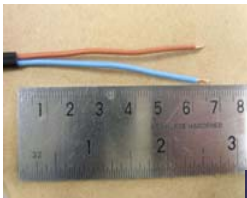
**6.** Check the alignment of the transmitter by gradually blocking its detection window with a card. Slide the card across the window, first from left to right then right to left. In each direction, only a small portion of window should be still exposed when the green light comes on. Adjust the bracket to obtain this result. Do the same adjustment on the emitter till you have the strongest beam. If this procedure is not done you may experience regular false activations.



**3.** Mount the units so the detection beam will be about 800mm above ground level and align visually. Mount the solar panels pointing skyward. Keep solar panel at least 180mm away from transmitting antenna, use a socket set with extender for fastening the tech screw. Fasten cables using nail-in clips provided.



**7.** Fasten antenna to base receiver and locate receiver away from cordless telephones and any device that may radiate interference. Connect power



**4.** Strip solar panel wires as shown and connect the red and brown wires to the correct terminals inside each enclosure. Make sure the solar panel wires will not interfere with the lens on the transmitters front cover. Plug in batteries and make sure they are seated flat on the ledges of the Enclosure.

**8.** Walk through the beam several times to test the system. Drive vehicle through beam at the fastest speed anyone is likely to be going. Test again in wet weather.

Ok

Finished

Still need help  
Read  
trouble shooting  
Section or call  
(04) 905 3858

